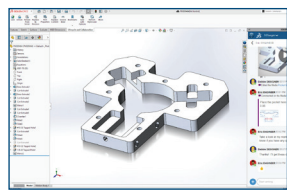


WHAT'S NEW IN SOLIDWORKS® 2025—DESIGN, COLLABORATION, AND DATA MANAGEMENT

All enhancements apply to 3DEXPERIENCE® SOLIDWORKS and SOLIDWORKS with Cloud Services unless stated otherwise.

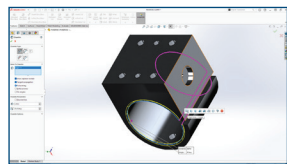


1 More Effective Collaboration and Data Management

- Connect and collaborate easily with industry peers by accessing communities directly from SOLIDWORKS.
- Stay up-to-date with real-time notifications, ensuring you always work with the latest file versions during collaborative design processes.
- Leverage your existing SOLIDWORKS PDM with 3DEXPERIENCE SOLIDWORKS.

Benefits

Deliver innovative products faster with improved collaboration and data management capabilities.

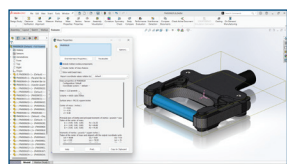


2 Greater Part Modeling Flexibility

- Boost efficiency by leveraging selection accelerators for the Chamfer command to rapidly select edges.
- Create smoother variable size fillets with an option to continuously blend fillet edges.
- Automatically create customizable bend notches on the flat pattern bend line of a sheet metal part.

Benefits

Create the exact geometry needed for your design more efficiently.

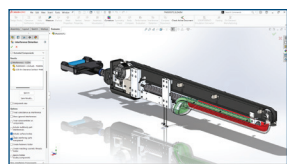


3 Boosted Performance

- Create a highly simplified part and make it associative to the parent part by using the Silhouette defeature method.
- Add a SpeedPak configuration at the top level of the assembly without needing to modify subassemblies.
- Accelerate the calculation of mass properties for assemblies with previously calculated values for parts and bodies.

Benefits

Boost design productivity through performance improvements.

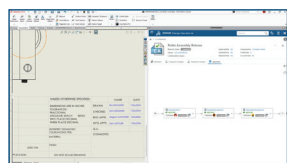


4 Faster Assembly Modeling

- Copy assembly components along with their associated advanced and mechanical mates.
- Detect interferences between surface bodies or surface and solid bodies.
- Detect interferences while in Large Design Review mode.

Benefits

Accelerate assembly design and ensure manufacturability.

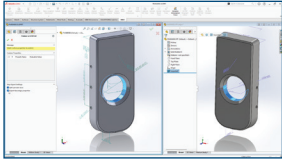


5 Improved Detailing of Drawings

- Enforce company rules with multi-approval stamps on drawings anytime, on any connected device.
- Easily access and view extended drawing attributes, including PLM properties.
- Choose whether to display the quantity for structural members in the BOM table as 'QUANTITY' or 'LENGTH x QUANTITY'.

Benefits

Reduce the need for manual workarounds and streamline drawing approval.

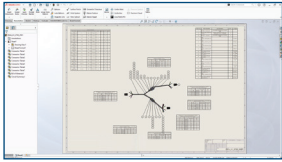


6 More Flexible 3D Dimensioning and Tolerancing

- Create DimXpert™ dimensions from sketch dimensions.
- Get DimXpert dimension support for drafted geometry.
- Communicate product manufacturing information (PMI) downstream with increased flexibility and control with the new Step 242 export settings.

Benefits

Enjoy faster, more flexible 3D dimensioning and tolerancing.

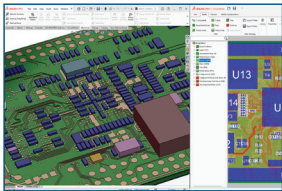


7 Improved Harness Board Drawings

- Improve the organization and positioning of tables and balloons on flattened drawings with refined auto-placement of tables, dimensions, balloons, and formats.
- Automatically update the electrical harness documentation after design changes.

Benefits

Create improved harness board drawings and documentation for manufacturing.



8 Streamlined ECAD/MCAD Collaboration and Design

- Import internal and external copper features including vias, traces, and shapes to SOLIDWORKS using IDX files.
- Enable more accurate mass, thermal, structural, shock, and electromagnetic analyses with access to more detailed copper trace information in the PCB.
- CircuitWorks is now available to all SOLIDWORKS users.

Benefits

Streamline the ECAD-MCAD collaboration process for a more complete PCB design and simulation workflow.

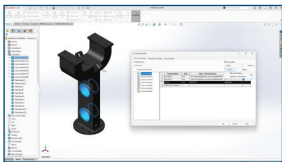


9 Improved Output With Immersive Rendering

- Automate the creation of photorealistic renderings by leveraging SOLIDWORKS Visualize with the SOLIDWORKS API.
- Take advantage of the latest advancements in GPU technology with real-time interactive ray tracing based on the open-standard Vulkan API for 3D graphics and computing.

Benefits

Create more compelling immersive content to inspire your customers.



10 User Experience Delighters

- Streamline the correction of sketches with broken relations and dimensions due to missing references with the ability to reattach broken sketch relations and dimensions.
- Create and copy the cut list property to specific cut list items, or to all cut list items in a model.
- Edit assemblies in Large Design Review mode faster with a breadcrumbs selection that makes the selection hierarchy clearer.

Benefits

Speed up design with improvements to usability.