

PRODUCT RELEASE ENGINEER



OBJECTIVE

Manage the engineering definition of products from early definition to final validation in collaboration across disciplines and the value network.

HIGHLIGHTS

- Improve productivity through smart data organization that fits user's needs
- Categorize IP and navigate on the engineering definition using category filters to facilitate access to data
- Manage the engineering definition with flexible visualization, mass editing and lifecycle operations
- Drive adoption of company part numbering conventions
- Accelerate cross-team collaboration and product development by assigning engineering responsibility to team members
- Maximize carry-over with an efficient, configured engineering definition

Title	QTO Master	Revision	Instance Name	Maturity Date	Description	Type	Part Number	Responsible
Yoke Control Assembly (20Default)	A.1	1	Yoke Control Assembly (20Default) 1	In Work	YOKE CONTROLER	Physical Product	None	Kevin SEBASTIAN
Yoke Control Assembly (20Control handle)	A.1	1	Yoke Control Assembly (20Control handle) 1	In Work	HYDRAULIC CONTROL ASSEMBLY	Physical Product	None	Kevin SEBASTIAN
Flange Assembly (20Default)	A.1	1	Flange Assembly (20Default) 1	In Work	FLANGER ASSEMBLY	Physical Product	None	Kevin SEBASTIAN
Yoke Yoke (20Default)	A.1	1	Yoke Yoke (20Default) 1	In Work	YOKE YOKE	Physical Product	None	Kevin SEBASTIAN
Yoke Yoke (20Default)	A.1	1	Yoke Yoke (20Default) 1	In Work	YOKE YOKE	Physical Product	None	Kevin SEBASTIAN
Handle Assembly (20Default)	A.1	1	Handle Assembly (20Default) 1	In Work	HANDLE ASSEMBLY	Physical Product	None	Kevin SEBASTIAN
Arm (20Default)	A.1	1	Arm (20Default) 1	In Work	ARM	Physical Product	None	Kevin SEBASTIAN
Arm (20Default)	A.1	1	Arm (20Default) 1	In Work	ARM	Physical Product	None	Kevin SEBASTIAN
Flange Pin Bearing (20Default)	A.1	1	Flange Pin Bearing (20Default) 1	In Work	BUSHING	Physical Product	None	Kevin SEBASTIAN
Flange Pin Bearing (20Default)	A.1	1	Flange Pin Bearing (20Default) 1	In Work	BUSHING	Physical Product	None	Kevin SEBASTIAN
Flange Pin Bearing (20Default)	A.1	1	Flange Pin Bearing (20Default) 1	In Work	BUSHING	Physical Product	None	Kevin SEBASTIAN
Flange Pin Bearing (20Default)	A.1	1	Flange Pin Bearing (20Default) 1	In Work	BUSHING	Physical Product	None	Kevin SEBASTIAN
Flange Pin Bearing (20Default)	A.1	1	Flange Pin Bearing (20Default) 1	In Work	BUSHING	Physical Product	None	Kevin SEBASTIAN
Flange Pin Bearing (20Default)	A.1	1	Flange Pin Bearing (20Default) 1	In Work	BUSHING	Physical Product	None	Kevin SEBASTIAN
Flange Pin Bearing (20Default)	A.1	1	Flange Pin Bearing (20Default) 1	In Work	BUSHING	Physical Product	None	Kevin SEBASTIAN
Washer (20Default)	A.1	1	Washer (20Default) 1	In Work	WASHER	Physical Product	None	Kevin SEBASTIAN
Washer (20Default)	A.1	1	Washer (20Default) 1	In Work	WASHER	Physical Product	None	Kevin SEBASTIAN
Arm Pin (20Default)	A.1	1	Arm Pin (20Default) 1	In Work	ARM PIN	Physical Product	None	Kevin SEBASTIAN
Arm Pin (20Default)	A.1	1	Arm Pin (20Default) 1	In Work	ARM PIN	Physical Product	None	Kevin SEBASTIAN
Lock Nut (20Default)	A.1	1	Lock Nut (20Default) 1	In Work	LOCK NUT	Physical Product	None	Kevin SEBASTIAN

Navigate the Engineering Definition

OVERVIEW

With a single shared engineering product definition, **Product Release Engineer** enables engineering and other disciplines to easily contribute to the product engineering definition and access up-to-date information to advance product innovation.

Product Release Engineer helps reduce engineering definition time by maximizing data reuse, reducing product structure complexity, simplifying product governance through responsibility assignments and ensuring adherence to corporate standards through early definition of product part numbers.

Product Release Engineer enhances user productivity across the value network, delivering a modern, web-based, intuitive and easy-to-use experience for content reviews and organizing engineering data, as well as creating, validating and sharing product information and design data.

CAPABILITIES

Access Engineering Items from a Dashboard

Gain instant access to a list of engineering items with the ability to narrow down to items of specific interest. The dashboard enables a "quick start" of a new engineering definition, either manually or by import from a spreadsheet.

Initiate Advanced Product Definition

Carry-over an existing engineering definition using advanced strategies to duplicate, reuse and exclude existing engineering items to save time and reduce content errors.

Define Enterprise Item Numbers

Set enterprise item numbers on engineering items according to company strategy. The enterprise item numbers ensure the right number is associated to the engineering item early in the process. An administrator setting determines if enterprise item numbers are created by manual or automatic methods.

Update Content and Lifecycle Maturity

Create and update the engineering definition using engineering items that can be reused, edited, replaced, revised and released to ensure company form, fit, and function practices are respected.

Allocate Ownership of Engineering Items

Assign user responsibility to ensure the allocation of the right person to the right engineering item(s).

Organize Engineering Content

Personalize the engineering definition display to minimize complexity and increase data control by selecting the desired view, applying attribute-based groupings, then selecting attributes to be displayed and in which order.

Define Material Consumption

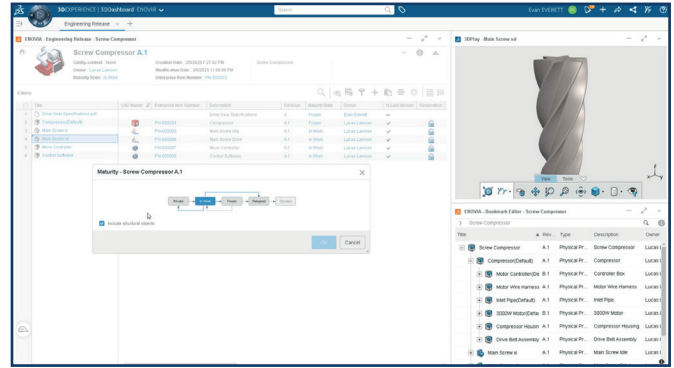
Define the consumption quantity for materials, such as glue or oil, in the engineering definition. The total quantity can be easily displayed through grouping the material. Define quantities in volume units such as liter, deciliter units.

Export to Excel

Export the engineering definition to Microsoft® Excel® for internal or external reuse.

Work Under Change Actions

Work using a formal change and release process to track modifications and maturity changes.

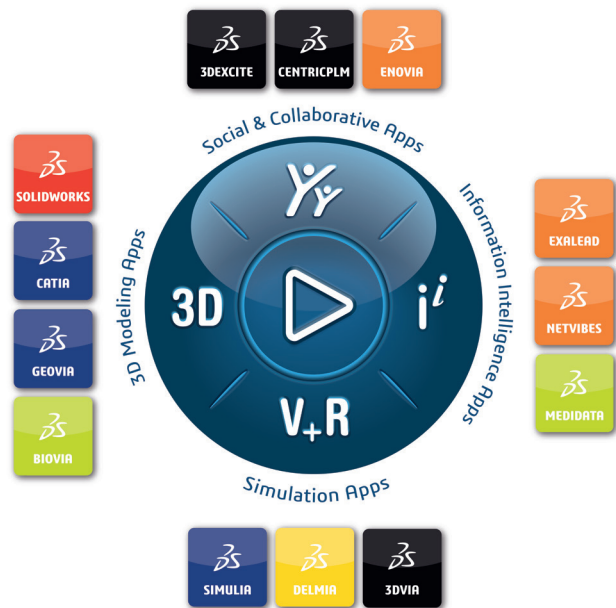


Update Lifecycle Maturity

Our 3DEXPERIENCE® Platform powers our brand applications, serving 11 industries, and provides a rich portfolio of industry solution experiences.

Dassault Systèmes, the 3DEXPERIENCE Company, is a catalyst for human progress. We provide business and people with collaborative virtual environments to imagine sustainable innovations. By creating 'virtual experience twins' of the real world with our 3DEXPERIENCE platform and applications, our customers push the boundaries of innovation, learning and production.

Dassault Systèmes' 20,000 employees are bringing value to more than 270,000 customers of all sizes, in all industries, in more than 140 countries. For more information, visit www.3ds.com.



©2020 Dassault Systèmes. All rights reserved. 3DEXPERIENCE®, the Compass icon, the 3DS logo, CATIA, SOLIDWORKS, ENOVIA, DELMIA, SIMULIA, GEOVIA, EXALOAD, 3D VIA, BIOVIA, NETVIBES, IPWE and 3DEXCITE are commercial trademarks or registered trademarks of Dassault Systèmes, a French "société européenne" (Versailles Commercial Register # B 522 306 440), or its subsidiaries in the United States and/or other countries. All other trademarks are owned by their respective owners. Use of any Dassault Systèmes or its subsidiaries trademarks is subject to their express written approval. XXX...2021x