

EIGHT ESSENTIAL VALUE PROPOSITIONS OF MANUFACTURING ERP

Whitepaper



INTRODUCTION

Almost everybody in business today understands the concept of Enterprise Resource Planning (ERP) software. Some are experts in ERP and some know it only as concepts of accounting, planning and reporting.

This whitepaper is for the latter group. It explores eight fundamental value drivers of ERP in a manufacturing environment and how they materially improve the profitability of a manufacturing operation. There are of course many additional impactful features and benefits of ERP systems, but understanding these eight benefits will provide you with the knowledge needed to evaluate your own business performance and consider if ERP software would be good investment for your business.



ACCOUNTS RECEIVABLE

A typical manufacturer will carry \$4 million dollars in outstanding accounts receivables (A/R) at any one point in time. If half that amount is past due, the carrying cost of that past due money is \$100,000 per year. By following best practices in accounts receivable billing and collections, manufacturers can save that \$100,000 in A/R carrying costs.

ERP manufacturing software brings the following tools to bear in operating an efficient billings to collection department:

- Automatic billing upon shipment
- Electronic invoicing and receipts
- Aging reports and alerts
- Matching invoices and applying payments
- Ability to re-email invoices and invoice copies during collections efforts
- Knowledge of customer and payment history

The single database approach to the DELMIAworks ERP system provides the accounts receivable department with a holistic view of customers, including their purchase history, size, profitability, payment history, terms, discounts, delivery times, and proof of delivery. A 360-degree view of the customer makes billing timely and collections cash efficient.

INVENTORY CONTROL

The typical manufacturer carries an inventory of \$6 million in raw and finished goods and has a 2X inventory turn ratio. If the inventory turn ratio is improved to 4X, which is considered minimum best practice, then \$150,000-per-year in inventory carrying cost will be avoided, and a \$2 million in cash freed up for investment in other parts of the business.

ERP manufacturing software's contribution to inventory control savings are made possible by providing the ability to:

- Forecast raw material needs based upon accurate Bill of Materials and sales orders
- Relieve and re-order raw material only as they are consumed
- Build finished goods based upon historical demand and sales orders
- Account for finished goods as soon as they are produced
- Relieve finished goods as soon as they are shipped
- Identify slow-moving and excess inventory items

The single data base approach of the DELMIAworks ERP provides the inventory and purchasing team end-to-end visibility of demand, consumption, and stock levels of both raw materials and finished goods. With knowledge of the entire demand, build, and ship production cycle, inventory levels can be optimized far beyond what manual and/or disparate systems can achieve.



QUOTES AND ESTIMATES

Accurate quoting is fundamental to manufacturing profitability. Like standard costs, which are discussed below, a mis-quoted item is an automatic deduction from profitability. Consistent mis-quoting, even in the 5% range, will cost a \$20 million manufacturer \$350,000 per year in lost profitability.

Advantages that ERP manufacturing software brings to quotes and estimates include:

- Quote/estimate history as starting points and points of comparison
- Price management, including pricing optimization and price control
- Proven accurate Bills of Materials that can be building blocks for new quotations
- Accurate and current raw material costs
- Documented machine and labor costs
- Proven production rates and costs

The single database approach of DELMIAworks ERP system allows the quoting team to produce estimates that take into account all of the factors and actual history that go into producing accurate and timely quotations. You cannot accurately quote in an information vacuum. Quotes require a broad and accurate collection of information flowing together into a single document that can be delivered to prospects and used as a benchmark throughout the product lifecycle.

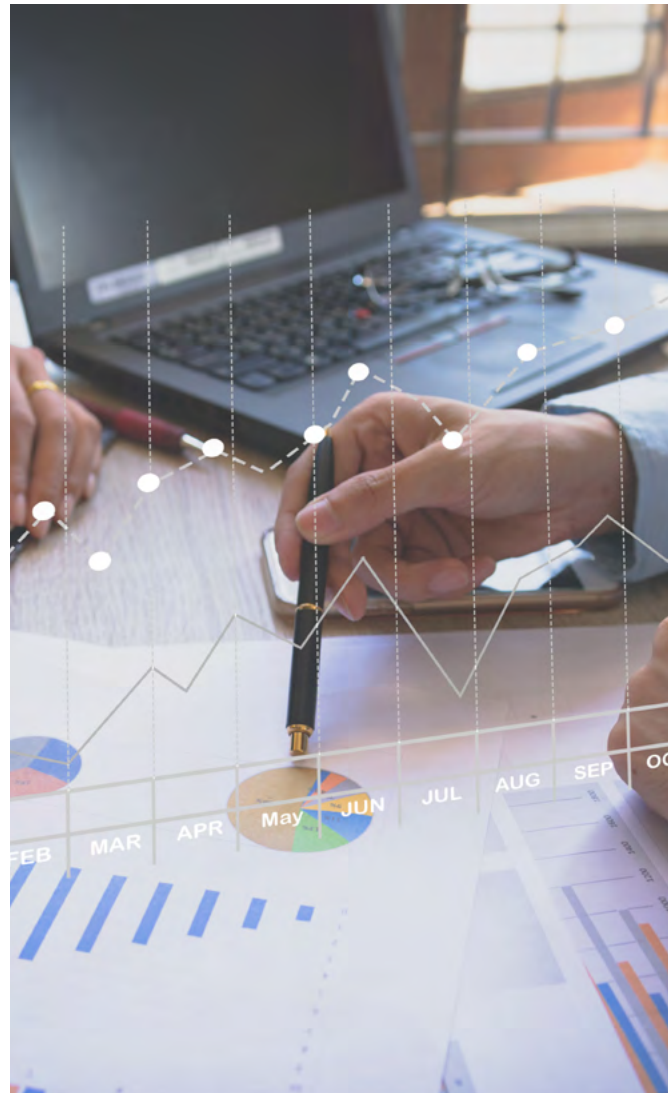
STANDARD COSTS

Most manufacturers operate their businesses on a standard cost model, and price their products based on standard costs. As a result, accurate standard costs are at the very core of manufacturing profitability. If standard costs are understated by only 5%, profitability is severely impacted. A \$20 million business with a 5% average error in its standard cost will lose profits of up to \$700,000 per year.

ERP manufacturing software determines accurate standard costs by knowing:

- Actual raw material usage
- Actual labor consumption
- Actual machine time
- Actual production rate
- Actual scrap rates

As with quotes, standard costs are based on a range of inputs, from materials to production rates to labor consumption. Moreover, these factors will change over time. Therefore, knowing actual production costs and how they compare to standard production cost is essential to managing core manufacturing profitability. By measuring production in real time, e.g. production rates and resource consumption, actual costs are documented job by job and can be compared to standard costs, allowing for adjustments to be made based upon actual events and updating standard cost for actual profit margins and/or revealing issues that have crept into the production process that need to be corrected.



INVENTORY EVALUATION

Inventory value is one of the hardest major cost factors to track. Manual methods almost always result in a significant difference between the evaluation of inventory in the accounting system and the actual value of the inventory on hand. Annual physical counts are insufficient to accurately manage inventory value, while frequent physical counts are expensive to execute. However, since inventory is a major cost factor for any manufacturer, accurate accounting of inventory evaluation is critical and must be determined. The key is using ERP for inventory control to achieve accurate daily inventory value. Automated inventory tracking typically calculates inventory investments plus or minus 2%. This enables accurate inventory value reporting for financial and tax purposes.

The advantages of ERP manufacturing software in accurate inventory evaluation are:

- Automatic recording of inventory purchases (in-flows)
- Timely relieving of raw materials and updates to quantity on hand as they are consumed by production (consumption)
- Accurate tracking of finished goods quantity and value (conversion)
- Tracking of scraped or spoiled raw materials (waste)

Inventory is a constantly flowing movement of money. Money out for purchasing, money tied up in quantity on hand, money freed up as finished goods ship to the customer. Manual tracking of inventory is extremely difficult and time consuming. Inventory control lends itself very well to automation. In particular end-to-end automation that is aware of in-flow, consumption, conversion, waste, and shipment in real time.



SCHEDULING

The availability and capacity of machines ultimately determine a plant's capacity to produce revenue. Underutilized machine capacity due to scheduling inefficiencies and unplanned downtime often reduces a plant's effective capacity by 25%, potentially leaving a typical business with some \$3 to \$5 million a year in unrealized revenue.

ERP manufacturing software drives utilization through:

- Automatic scheduling that takes into account all production factors (orders, raw materials, machine availability, and labor) performed in minutes instead of days or hours
- Rescheduling to accommodate unexpected events in real time
- Minimizing lost machine and labor hours
- Providing the ability to expedite with minimal disruption of normal production
- Running best predictive use of select tools and equipment

Scheduling is a complex, constraint-based exercise. Key factors—including demand, availability of raw materials, availability of tools and equipment, required delivery time, production rates—all become part of a complex calculation, that when done manually is only a rough estimate of optimization in the very best case. Often even best-case scheduling is beyond the capabilities of the production management team, and companies have to settle for just good enough scheduling. This is entirely unnecessary in an automated environment where the constraints can all be considered quickly and accurately. Here, the scheduling system is aware of all constraints, such as when an order is due, what machines are available to do the work, and when the raw material can be dispositioned to the equipment enabling full utilization of plant and equipment.



QUALITY CONTROL

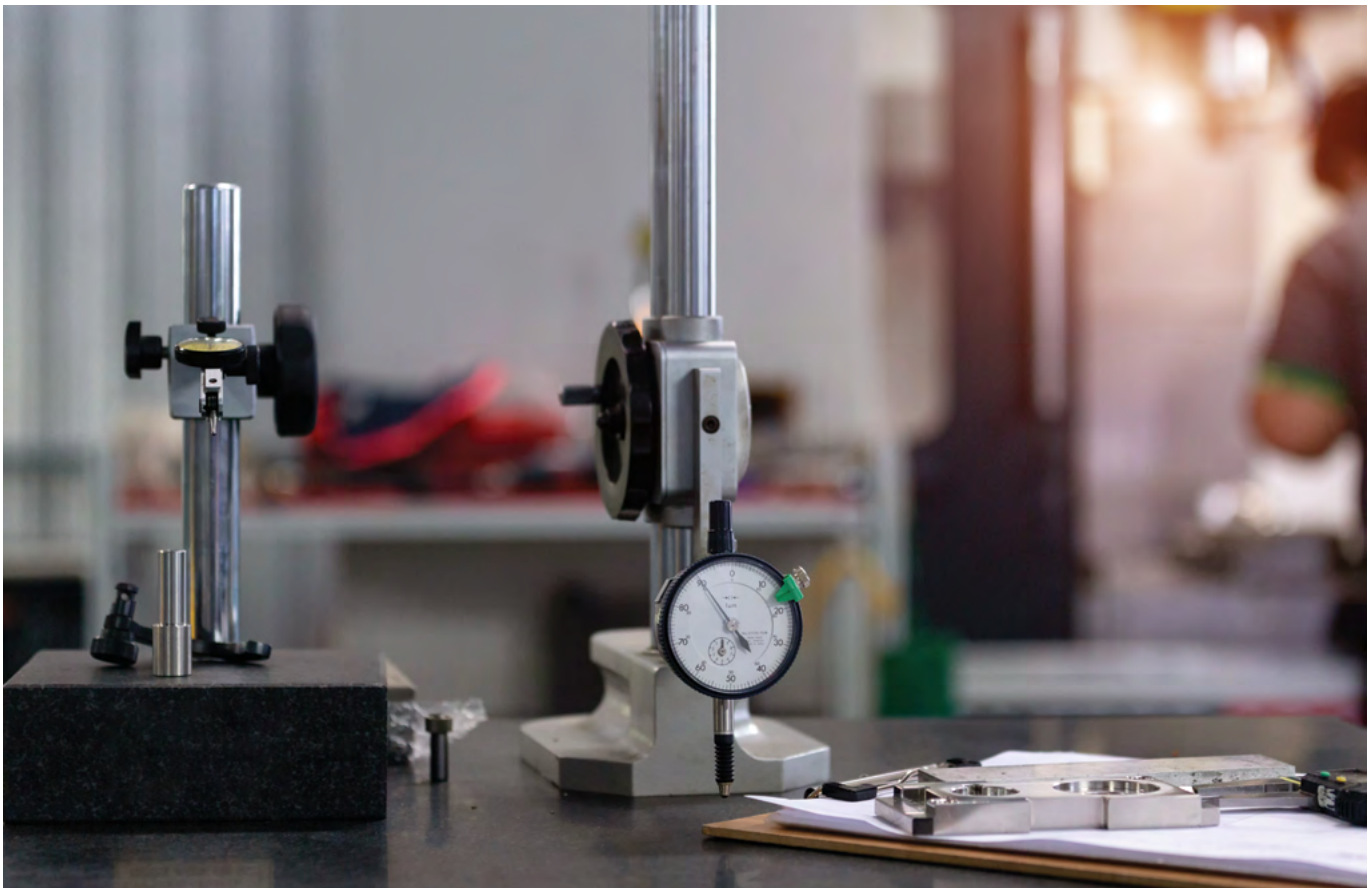
Defective parts created in the production process result in a 100% lost profit. Catching defects early in the process curtails the production of defective parts and dramatically increases profitability—in addition to reducing downstream customer satisfaction issues. Creating a defective part and then producing a new part to replace it effectively doubles production costs. A part with a 25% profit margin quickly becomes a part with a minus 50% profit margin. For a typical \$20 million producer with a 2% defect rate, this can amount to \$600,000 per year in the cost of poor quality.

Quality management is the institutionalization of inspections and the documentation of measurements and results. Material reviews, process monitoring, and inspections are at the heart of quality management.

ERP enables repeatable quality programs by building inspection procedures into the day-to-day operation of the business.

- Workflows ensure inspection takes place before downstream process steps occur
- Process trends are monitored, and alerts are triggered before they become issues
- The results of inspections are recorded for root cause analysis and customer documentation
- Corrective action programs are documented and enforced
- Statistical process control (SPC) analysis allows increased production rates without introducing quality issues

Quality management requires end-to-end knowledge of multiple elements of the operations. Are the raw materials in compliance? Is the tooling and equipment in tolerance? Is the rate of production slow or fast? Did in-line inspections take place as required? Did a properly trained operator conduct the inspection? The list is long, and the information comes from all corners of the business. Like all the essential disciplines of the manufacturing operation, quality management requires broad access to information and a holistic view of the business to be comprehensive and preventative.



CUSTOMER SERVICE

Timely and accurate customer service drives the ability to charge full price for products. Being able to quote accurate delivery times, meet customer delivery dates, and deliver quality products ensures repeat business. But in addition to on-time, quality delivery, a business must be easy to do business with. Readily available information, flexibility in scheduling, and accurate labeling and packaging are all part of delivering top-grade customer service.

Low service levels result in customer turnover, and customer turnover is very expensive. Having to replace just 10% of existing business with new customers can cost a \$20 million manufacturer 5% of its annual profits in the form of sales-related expenses, re-tooling, and learning curves for producing new products versus established production.

In addition to the advantages ERP manufacturing software brings to the inventory availability, scheduling, and quality that are essential to customer service, it also provides a host of tools to enable the last mile of customer service. These include:

- CRM for 360-degree view of the customer
- Accurate shipments and invoices
- Production status to answer delivery and availability questions in real time
- Electronic data interchange (EDI) to conduct business electronically
- Automated labeling to provide value-added product information

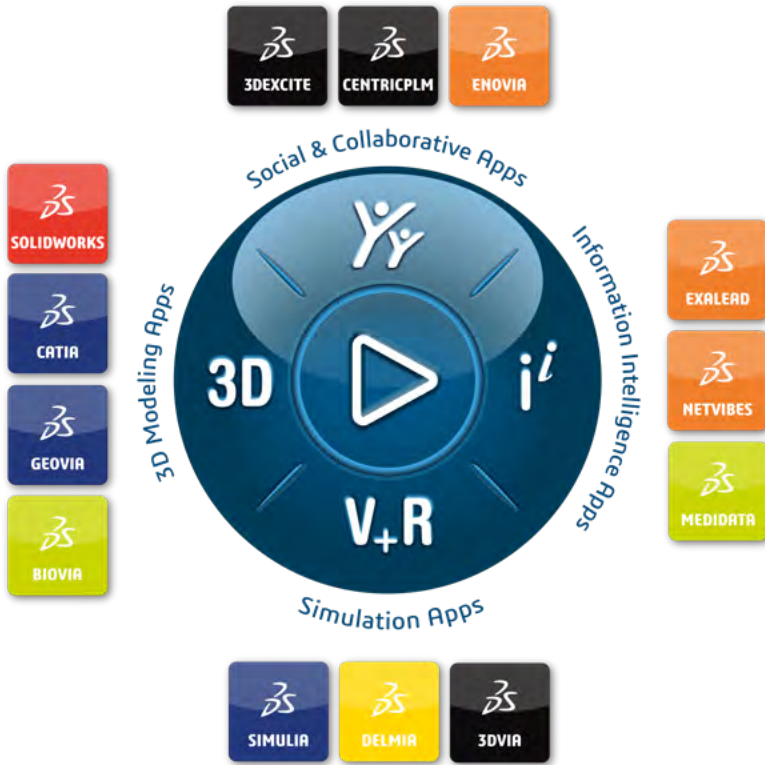


Customer service is the ultimate measure of the value of a single-database manufacturing software solution. Did we quote it right? When will it be delivered? Is it built to specification? Was it labeled correctly? Was it invoiced correctly? All are interrelated questions and illustrate how all the operations of the business need to come together to deliver the customer satisfaction that generates profitable and repeat business.

CONCLUSION

ERP, at its core, is a tool for automatically capturing data and organizing information, which builds best practices—and very importantly, best practices enforcement—into the everyday operations of a manufacturer's business. In doing so, it empowers management with the information and tools to execute profitable and predictable business strategies.

For more information, please visit www.3ds.com/delmiaworks or call 1.866.367.3772



Our **3DEXPERIENCE®** platform powers our brand applications, serving 11 industries, and provides a rich portfolio of industry solution experiences.

Dassault Systèmes, the **3DEXPERIENCE** Company, is a catalyst for human progress. We provide business and people with collaborative virtual environments to imagine sustainable innovations. By creating 'virtual experience twins' of the real world with our **3DEXPERIENCE** platform and applications, our customers push the boundaries of innovation, learning and production.

Dassault Systèmes' 20,000 employees are bringing value to more than 270,000 customers of all sizes, in all industries, in more than 140 countries. For more information, visit www.3ds.com.

Americas
Dassault Systèmes
175 Wyman Street
Waltham, Massachusetts
02451-1223
USA

Europe/Middle East/Africa
Dassault Systèmes
10, rue Marcel Dassault
CS 40501
78946 Vélizy-Villacoublay Cedex
France

Asia-Pacific
Dassault Systèmes K.K.
ThinkPark Tower
2-1-1 Osaki, Shinagawa-ku,
Tokyo 141-6020
Japan

© 2019 Dassault Systèmes. All rights reserved. 3DEXPERIENCE, the 3DEXPERIENCE logo, 3D, V+R, SOLIDWORKS, CATIA, GEOVIA, BIOVIA, EXALEAD, NETVIBES, MEDIDATA, CENTRICPLM, 3DEXCITE, SIMULIA, DELMIA, 3DVIA are trademarks or registered trademarks of Dassault Systèmes or its subsidiaries in France, the United States and/or other countries. All other trademarks are owned by their respective owners. Use of any Dassault Systèmes or its subsidiaries trademarks is subject to their express written approval.

DASSAULT SYSTEMES | The **3DEXPERIENCE®** Company

 **SIMTEK**
Real Time. Real Results

SIM Technologies Pvt. Ltd.

3rd Floor, "Mamanjee Centre",
S7-A, Thiru-Vi-Ka Industrial Estate,
Guindy, Chennai – 600 032

+91-8754447021

marketing@simtek.in